



- high quality furniture fittings

12.10.256
Internal Pull out test

Internal Test

06/11/14

1/3



Item number 12.10.256

Hole diameter [mm]	Ø9,5mm (see notes in appendix section)
Class of wood	
Test tool	Lifter, Round head screw 8.8 M6x50, heavy washer

Test layout





- high quality furniture fittings

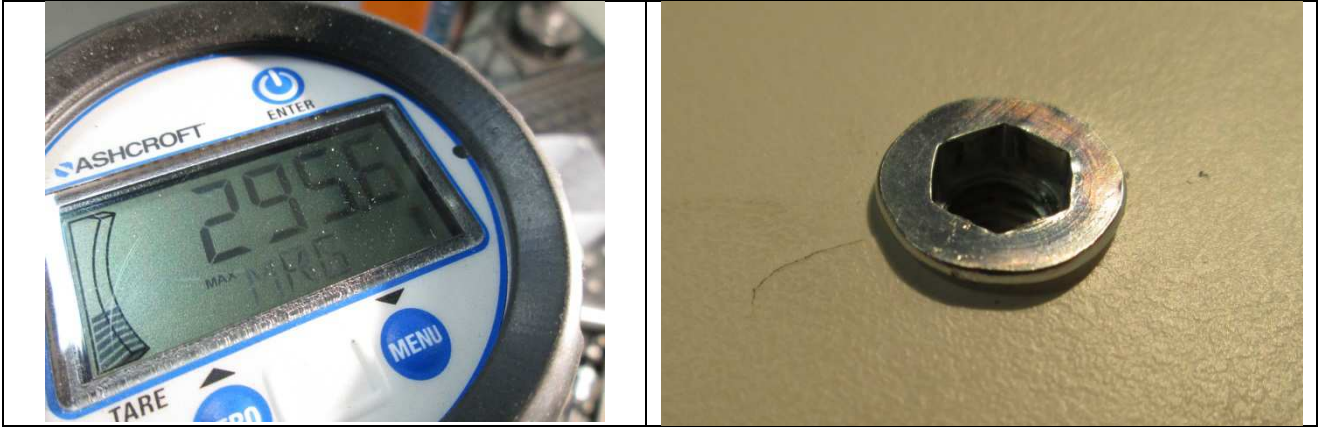
12.10.256
Internal Pull out test

Internal Test

06/11/14

2/3

Test Results



Sample	Results
12.10.256	295,6 Kg [2900 Newton]

Comments: cracks in panel due to high tension value. No problem with manual insertion.
Great stability after screwing action.

Appendix

Test was initially performed with $\varnothing 8,5\text{mm}$ and $\varnothing 9,0\text{mm}$ holes.
Results were not collected because the panel was damaged and the screwing action was not possible.



Picture - 1 - Cracks ($\varnothing 8,5$ test)



- high quality furniture fittings

12.10.256
Internal Pull out test

Internal Test

06/11/14

3/3



Picture - 2 - Cracks (Ø9,0 test)